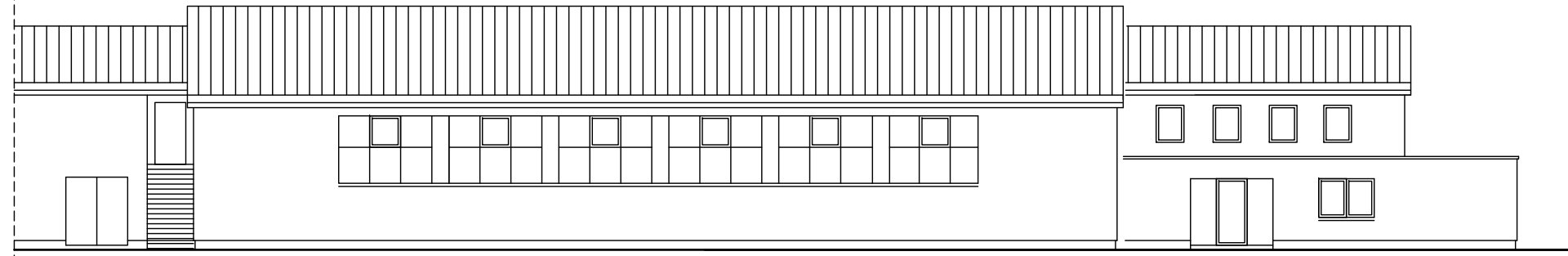
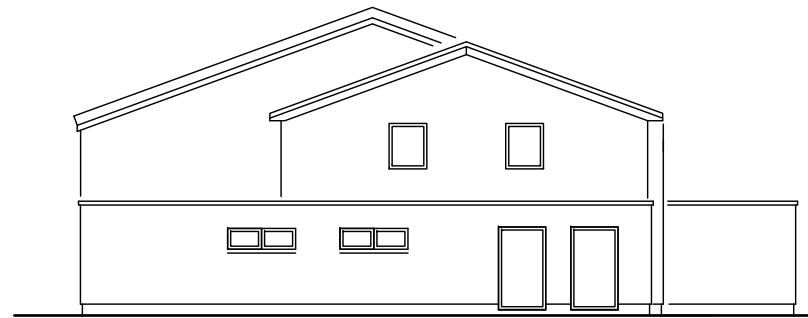


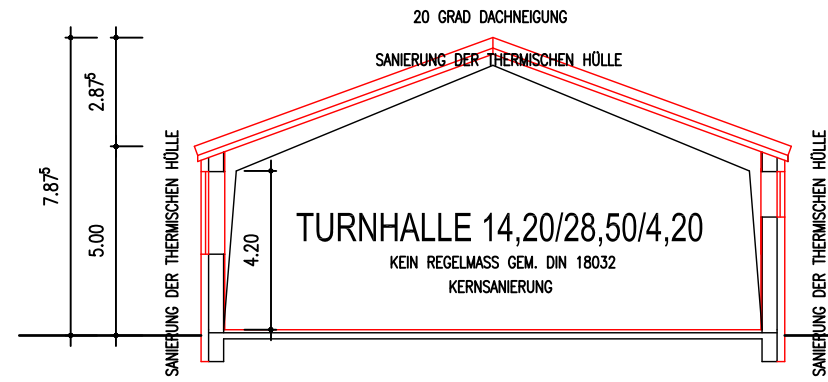
SANIERUNG TURNHALLE JAHNSTADIUM DINKLAGE STADT DINKLAGE



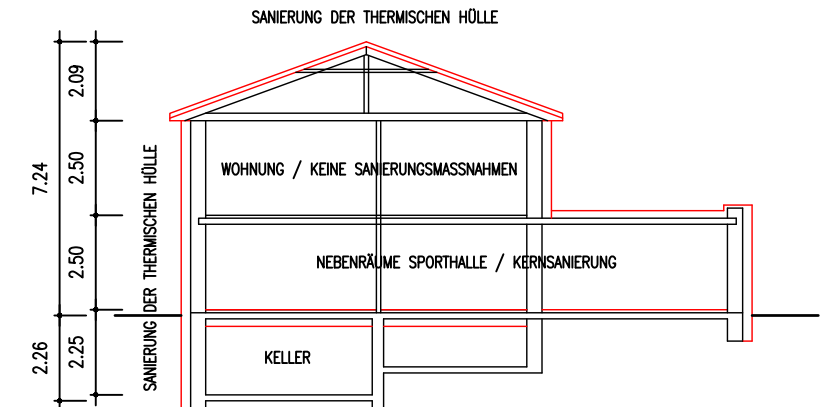
ANSICHT WEST



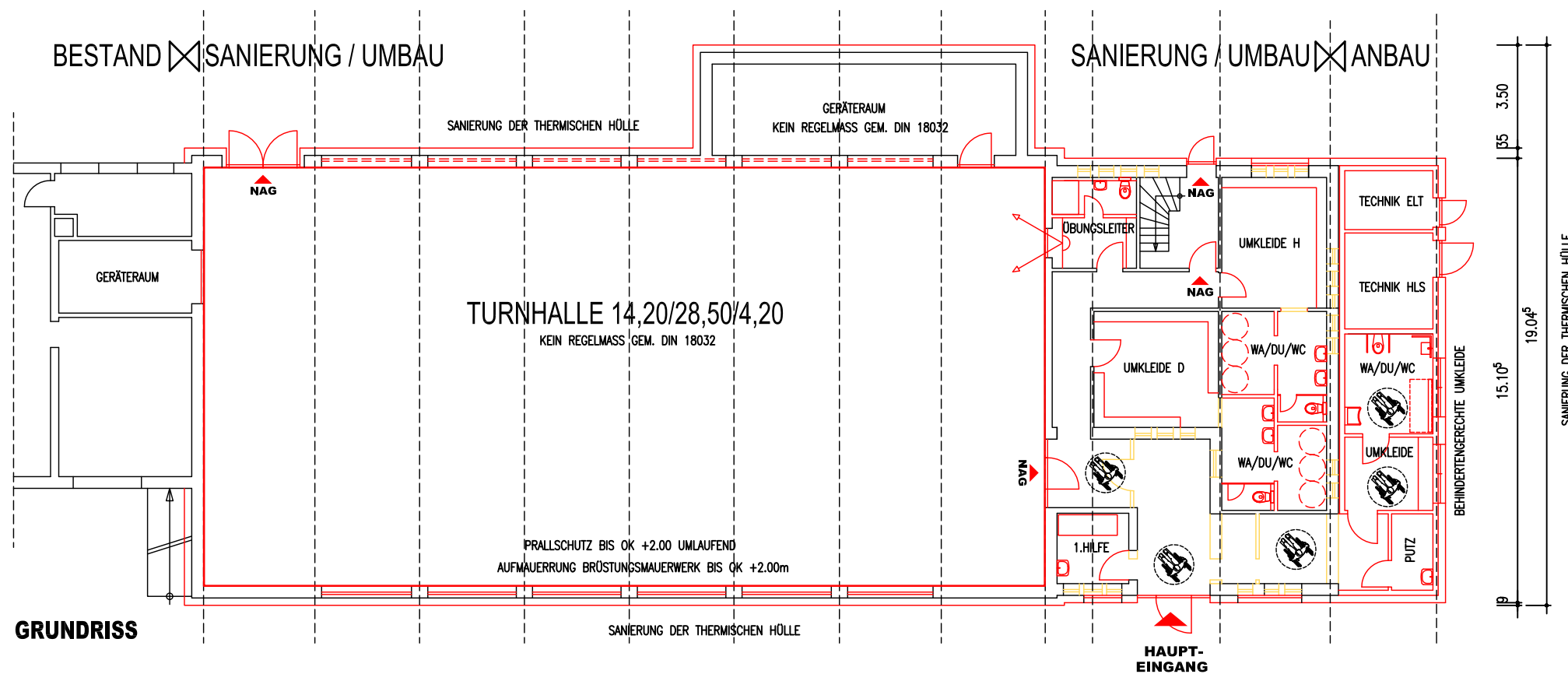
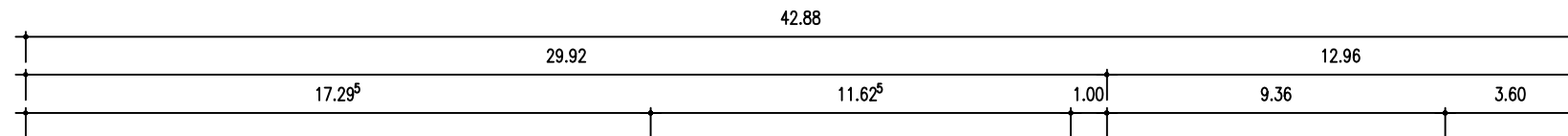
ANSICHT SÜD



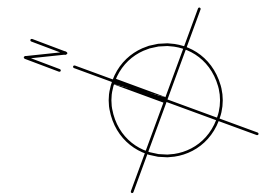
SYSTEMSCHNITT TURNHALLE



SYSTEMSCHNITT NEBENRÄUME



GRUNDRISS



SANIERUNG TURNHALLE JAHNSTADIUM DINKLAGE

AUFTRAGGEBER
STADT DINKLAGE

VORENTWURF

MASSTAB	DATUM	BLATTNUMMER
1 : 200	15.08.23	1
INDEX	GEPLANT	BLATTGRÖSSE
-	ROHLFS	

ROH

ARCHITEKTUR
FACHPLANUNGSBÜRO
FÜR SPORTHALLEN

NEDDEREND 41
26121 OLDENBURG
T. 0441 361 456 90
M. 0162 938 78 83

www.sporthalle-planung.de